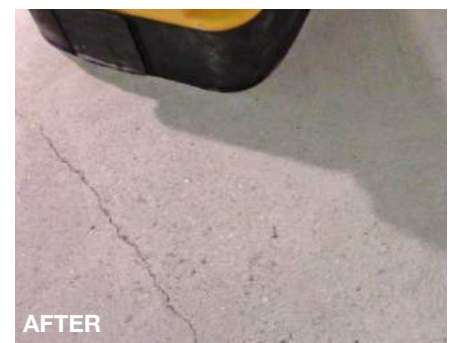
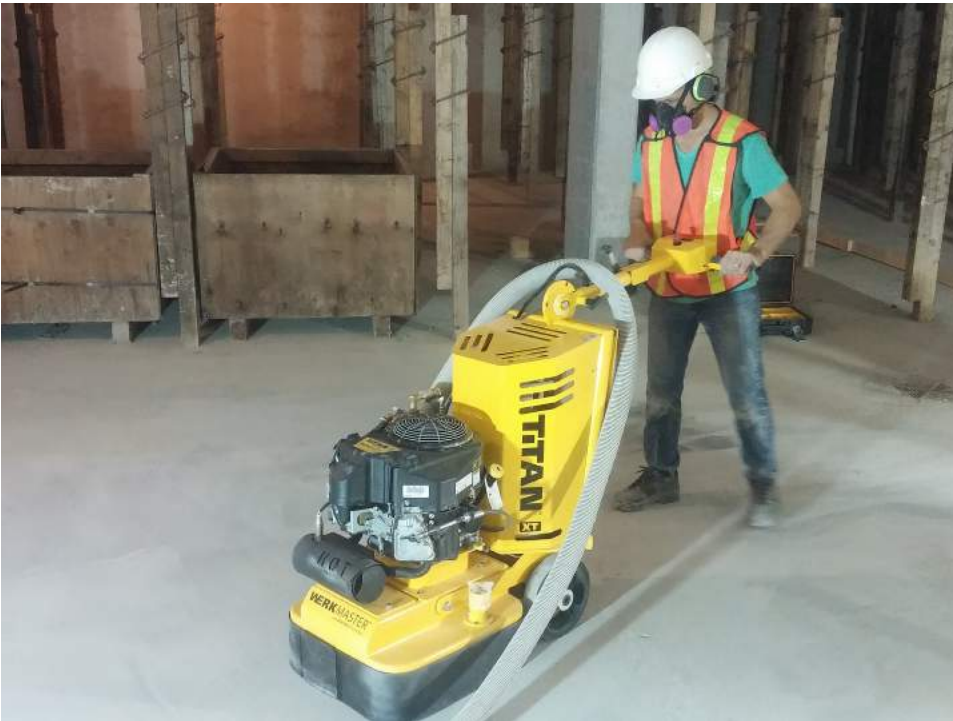


CASE STUDY CROWN TOWER PARKADE, COQUITLAM, BC

Project: Crown Tower, Coquitlam, BC - Parkade

Contractor: Beedie Construction



Challenge

- Heavily rained on concrete slab
- Slab is out of spec for floor flatness
- New membrane requires CSP3
- Fast turnaround
- Eliminate need to shot blast & grind

Equipment

- WerkMaster Titan XT - Propane
- Shark HD Segment - Hard Bond 16G
- Single HD Segment - Hard Bond 16G
- Ermator S36 Vacuum

Results

- 2.5X faster prep vs traditional grinder
- 100% elimination of shot blasting
- 40% overall cost savings
- No additional edge work required

Situation & Solution

High rise construction in a city that has high levels of rain can present challenges to concrete contractors. This was the case when Beedie Construction went to pour and place their parkade earlier this year. Provisions were made to protect the slab as much as possible but unfortunately heavy rain made its way into the parkade and 40K SQ FT of concrete now needs to be brought up to specification. Tight timelines required a one step solution that would remove the latency left by the rain and create a CSP 3 surface profile suitable to apply a resin coating.

The WerkMaster Titan XT Propane was chosen because of its high rate of production and ability. The added benefit of not needing any additional power to run the machine made start up time instantaneous. WerkMaster machines feature Octi-Disc™ Technology - 8 direct driven heads that are configured to allow ALL models to get to within 1/8" or 3mm of a wall.

The combination of technology and tooling allowed for effective removal and a CSP3 equivalent profile for bonding new epoxy membrane.

For a video demonstration of this process please visit:

<http://www.werkmaster.com/surface-preparation-on-a-rough-rained-on-concrete-floor/>

The Titan XT is used for commercial, industrial, and maintenance projects and can auto sense single or 3 phase 230 volt power.

The Titan XT is 7 Machines in 1 – grinder, stripper, scarifier, buffer, burnisher, polisher and edger.



All WerkMaster machines edge to within 1/8" (3 mm) of the wall. No further edge work is required. This can translate to upto a 40% time saving reduction on your job.



Our profile has been endorsed by topping and resin manufactures to give a proper CSP3 bonding surface with their products.

WerkMaster Grinders & Sanders Inc.
6932 Greenwood Street, Burnaby, BC V5A 1X8
tel: 604.629.8700 | toll free: 1.866.373.WERK | fax: 604.444.4231
www.werkmaster.com | email: sales@werkmaster.com

WERKMASTER™
Ultra Floor Systems & Solutions